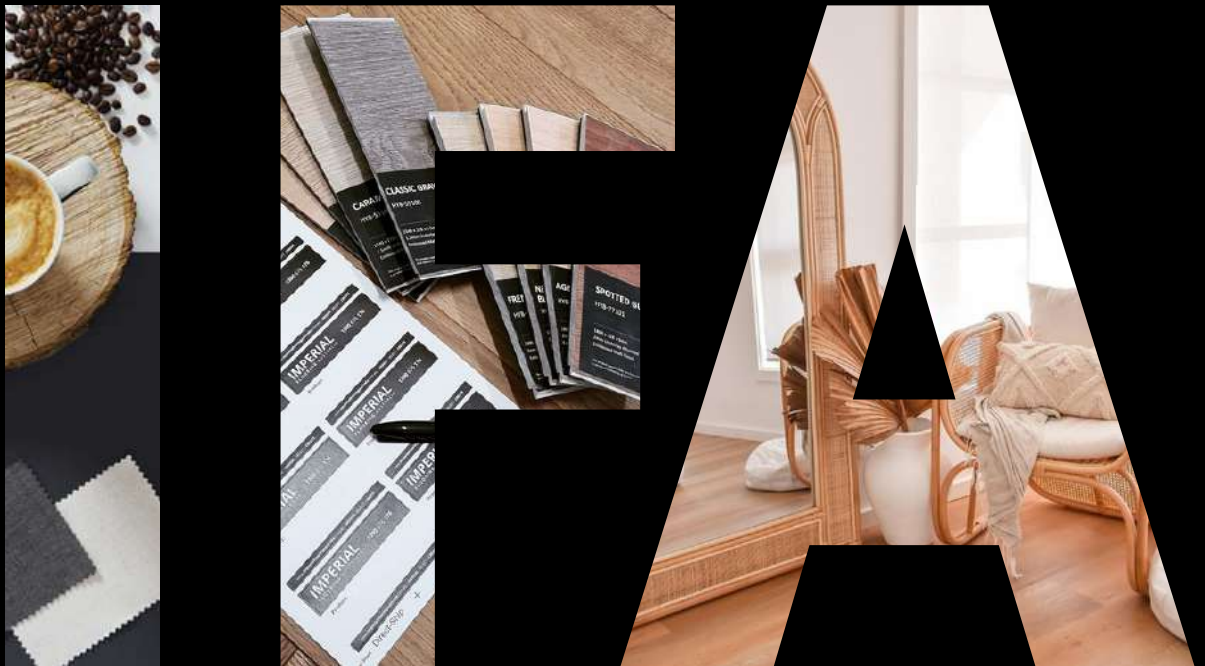


PRODUCT BROCHURE

IMPERIAL FLOORING AUSTRALIA

DESIGN - SELECT - CREATE



WHOLESALE - COMMERCIAL - TRADE - RETAIL - DIY
ONLINE FLOORING PACKAGES

1300 676 176

info@imperialflooringaustralia.com.au

www.imperialflooringaustralia.com.au



SHIPPING AUSTRALIA WIDE

Shop now. Pay later.
Always interest-free.

afterpay  FOLLOW US..



atfa

Australasian
Timber Flooring
Association

ABOUT US

Shop now. Pay later.
Always interest-free. **afterpay**



SHOP ONLINE + INSTORE - WHOLESALE FLOORING

Imperial Flooring Australia 100% Australian Owned Family Operating Business, Specialising in Wholesale + Commercial + Trade + Retail + DIY-Flooring Package Solutions. With locations in Wollongong, Sydney & Melbourne; our range of products provide you with a complete flooring installation solution for industrial, health, education, commercial, residential, etc.

Imperial Flooring Australia continue to set benchmarks for its clients providing products and services to Australia's leading construction companies.

Imperial Flooring Australia can provide you the full solution of certified contractors to get your project complete on time and within your budget.

Our Product Range:

- Cemimax Floor Self Levelling Compounds
- Bostik Flooring Adhesives, Membranes & Flooring Accessories
- Polished Concrete Floor Overlay Finishes
- Hybrid Waterproof Flooring
- Water Resistant Laminate Flooring
- Luxury Vinyl Plank & Tiles Flooring
- Australian Species Engineered Timber Flooring
- Oaks Engineered Timber Flooring 14mm + 15mm
- Herringbone Oaks Engineered Timber Flooring
- Chevron Oaks Engineered Timber Flooring
- Commercial Carpet Tile Flooring
- Commercial Vinyl Sheet Flooring
- Moisture Barriers / Waterproofing Membranes
- OX TOOLS - Tooling & Accessories
- Terrazzo & Decorative Floor Overlay Finishes
- Floor Primers & Concrete Repair
- Foam Underlays & Acoustic Underlays
- Trims, Scotias, C Channels, L Angles, Stair Nosing - Full range



We Ship Australia Wide!



**Australasian
Timber Flooring
Association**

OUR PORTFOLIO

Offering our clients a complete flooring package solution ✓



COMMERCIAL &
MULTI-RESIDENTIAL



RESIDENTIAL



WAREHOUSING



HEALTH



AGED CARE



INDUSTRIAL



EDUCATION



RETAIL



OFFICE FIT-OUTS

+ MORE

TALK TO OUR TEAM ON YOUR NEXT PROJECT REQUIREMENTS



DL55 Indoor Floor Self Levelling Compound 20kg

Description:

DL55 is an advanced cement and polymer based levelling and smoothing compound. DL55 is formulated for experienced commercial contractors to smooth and level large commercial and retail areas. Once dry it is suitable for the application of timber flooring, vinyl, carpet and tile floor finishes. Unlike normal hydration levellers, DL55 will harden and dry at temperatures down to 10°C.

Composition:

- Super smooth – requires no sanding
- Versatile – apply **1.5mm to 75mm** in one application
- Rapid hardening – walkable from 2 hours
- Superior flow – fast application
- Flexible – hand mix or pump application

Technical Data:

Compression Strength

After 1 Day Approx. 15MPa

After 7 Days Approx. 25MPa

After 28 Days Approx. 35MPa

Tensile Bending Strength

After 1 Day Approx. 5MPa

After 7 Days Approx. 7MPa

After 28 Days Approx. 10MPa

Colour: Grey

Water / Compound Ratio: 4.4L / 20kg bag

Working Time: 20-30 minutes

Pack-size: 20kg/bag

Coverage: Covers approx. 5m² at 3mm thick



DL33 Indoor Floor Self Levelling Compound 20kg

Description:

DL33 is an advanced cement and polymer based levelling and smoothing compound. DL33 is formulated for leveling work on standard construction in universal areas. DL33 is suitable for internal use on new or existing substrates for trafficable areas that are used internally as a underlayment.

Composition:

- Quick Setting
- Versatile – apply **1.5mm to 70mm** in one application
- Rapid hardening – walkable from 2 hours
- Superior flow – fast application
- Flexible – hand mix or pump application

Technical Data:

Compression Strength

After 1 Day Approx. 15MPa

After 7 Days Approx. 20MPa

After 28 Days Approx. 30MPa

Tensile Bending Strength

After 1 Day Approx. 4MPa

After 7 Days Approx. 5MPa

After 28 Days Approx. 5MPa

Colour: Grey

Water / Compound Ratio: 4-4.4L / 20kg bag

Working Time: 20-30 minutes

Pack-size: 20kg/bag

Coverage: Covers approx. 5m² at 3mm thick



DL59 Indoor + Outdoor Floor Premium Self Levelling & Overlayment Compound 20kg

Description:

DL59 is a cement based leveling compound with very high compressive strength to C40. DL59 is especially suitable for high traffic and heavy wear locations. DL59 can be also used as overlays for polished concrete. Suitable for all floor coverings

Composition:

- Super smooth – requires no sanding
- Extremely high strength of compression and bending
- Versatile – apply **1.5mm to 40mm** in one application
- Rapid hardening – walkable from 2 hours
- Superior flow – fast application
- Flexible – hand mix or pump application
- Can be polished
- Can add colours & aggregate to mix

Technical Data:

Compression Strength

After 1 day approx. 15MPa

After 7 days approx. 25MPa

After 28 days approx. 40MPa

Tensile Bending Strength

After 1 day approx. 5MPa

After 7 days approx. 7MPa

After 28 days approx. 10MPa

Colour: Grey

Water / Compound Ratio: 4.0L / 20kg Bag

Working Time: 20-30 minutes

Pack-size: 20kg/bag

Coverage: Covers approx. 5m² at 3mm thick

DP60 Porous Primer 5kg + 20kg Drums

Technical Data:

Packaging: Plastic bucket

Pack size:

- 5kg / 4L
- 20kg / 16L

Shelf-life: 12 months

Dry Time: 15 -20min

Coverage: Approx. 12m² / 1 Litre

Drying time: 4-6 hours

Suitable for CONCRETE + SCREED SUBFLOORS



DP80 Non Porous Primer 5kg + 20kg Drums

Technical Data:

Packaging: Plastic bucket

Pack size:

- 20kg / 16L

Shelf-life: 12 months

Dry Time: 15 -20min

Coverage: Approx. 12m² / 1 Litre

Drying time: 4-6 hours

Suitable for: Timber, Plywood, Tiles, Paint, Slate SUBFLOORS etc



IMPERIAL FLOOR PREPARATION SUBFLOOR QUICK APPLICATION GUIDE

FLOORING AUSTRALIA

#1 DISTRIBUTORS

SUBFLOOR:

Concrete (INDOORS)

Concrete (OUTDOORS)

Screed

All Tile Applications

Particleboard

Plywood

Slate

Floor Self Levelling Compounds

Primers

Decorative Overlays

	DL55	DL59	DL33	DL10	PP3	DP60	DP80	TERRAMAX	CEMITOP	ECOTAZ	DL59
Concrete (INDOORS)	✓	✓	✓	✓	✓	✓		✓	✓	✓	✓
Concrete (OUTDOORS)		✓		✓	✓	✓		✓	✓	✓	✓
Screed	✓	✓	✓	✓	✓	✓		✓	✓	✓	✓
All Tile Applications		✓					✓	✓	✓	✓	✓
Particleboard		✓					✓	✓	✓	✓	✓
Plywood		✓					✓	✓	✓	✓	✓
Slate		✓					✓	✓	✓	✓	✓



DL10 Bulk Filler Compound 20kg

Description:

DL10 is an advanced cement and polymer-based levelling compound with special aggregate. DL10 is formulated with high flow performance for levelling work on the installation of thick layers. DL10 is very suitable for quick-setting preparation solutions and also can be used as a fast set screed with low ratio water mixing.

Composition:

- Easy application
- Quick setting
- Superior flow — fast application
- Can be used as a fast set screed
- High-depth limitation **1.5mm to 150mm**
- Compatible with other cemimax levelling compounds
- For Interior and Exterior use
- Suitable for Radiant Floor Heating systems

Technical Data:

Compression Strength

After 1 Day Approx. 15MPa

After 7 Days Approx. 20MPa

After 28 Days Approx. 30MPa

Tensile Bending Strength

After 1 Day Approx. 5MPa

After 7 Days Approx. 7MPa

After 28 Days Approx. 8MPa

Working Time: 15-25 minutes

Pack-size: 20kg/bag

Coverage: Covers approx. 6m² at 3mm thick



PP3 Feather Edge Smoothing & Patching Compound Repair 5kg

Description:

Cemimax PP3 is an advanced cement and polymer based patching compound for repair, filling and patching up to 13mm depth. Can be used on a variety of substrates prior to installation of most flooring products. Priming is not required for most applications.

Suitable For:

- New or old cement leveling compounds
- Existing substrates with well-bonded, non-water-soluble adhesive residues
- Large and small format tile and natural stone
- Plywood underlayment
- All standard slabs, concrete or other substrate types
- Heavy wear in domestic and commercial locations including exposure to caster wheels
- Radiant floor heating systems

Technical Data:

Pack size: 5kg Bag

Shelf-life: 12 months

Water Mixing: Approx 1:2 (water:powder)

Coverage: Approx. 2.8m² at 3mm per bag

Drying time:

After approx. 10 min. for walked on

After approx. 15 min. for floor covering

After approx. 12 hours for wood flooring



ECOTAZ - Polished Concrete Overlay Floor Finish Compound 20kg

ECOTAZ is a Cementitious based levelling compound designed and based on a decorative overlay with Terrazzo Quartz and sand granular components. 5mm - 40mm in one application

Product Properties / Benefits:

Plastic dry cement mortar with finely graded fillers. When mixed with water, produces a hydraulic-setting smoothing compound with good flow properties and high coverage.

Composition:

Special cements, mineral fillers, polyvinyl-acetate co polymers, flow agents and additives.

- Super smooth
- Extremely high strength of compressive and bending
- Versatile - apply 5mm to 40mm in one application
- Rapid hardening - walkable from 2 hours
- Superior flow - fast application
- Can be polished
- Different colors and aggregate to selection

Technical Data:

Packaging: 20kg Bag

Coverage: approx 3m² @ 5mm thick

Dry Time: 2 hours

Working Time: 20 - 30 mins

Water / Compound Ratio: 3.0L / 20kg bag

Colour: Dark Grey with stones + Beige with stones

Compressive Strength

After 1 day approx. 15MPa

After 7 days approx. 25MPa

After 28 days approx. 35MPa

Tensile Bending Strength

After 1 day approx. 5MPa

After 7 days approx. 7MPa

After 28 days approx. 8MPa

POUR, CUT, POLISH & SEAL APPLICATION

DID YOU KNOW? This product can be poured Indoor + Outdoor over existing Concrete, Timber, Plywood, Slate, Tiles, Screed Subfloors!



TILES



CONCRETE



TIMBER



OUTDOORS



WET AREAS





Bostik Ultraset HP MS Polymer Timber Flooring Adhesive 16kg

Bostik Ultraset HP is a one part solvent and isocyanate free MS polymer based elastomeric adhesive formulated to adhere most types of timber flooring systems.

- Meets requirements for EN 14293:2006 "Adhesives for bonding parquet to subfloor"
- Non-hazardous, solvent and isocyanate free formulation
- Very low VOC
- Non flammable
- No mixing; ready to use
- Easy to spread while maintaining stable peaks
- Will not re-emulsify when in contact with moisture
- Tested to ASTM C794 for peel adhesion to various species of Australian hardwood
- Remains flexible after full cure
- Excellent initial grab and final bond strength
- Excellent acoustic properties
- Suitable over radiant heating
- Australian made

Recommended Uses

Adhering parquet, solid strip softwood and hardwood flooring, engineered flooring and bamboo flooring to concrete subfloors.

Adhering recommended acoustic underlays as an intermediate layer between subfloor and flooring system.

Specifications:

Colour: Brown

Viscosity: Smooth paste; holds peaks

Composition: MS Polymer

Application temperature: 5 to 30°C

Pack Sizes:

- 16kg Pail (10L)
- 600mL Sausage

Specific Gravity: 1.6 Approx.

Cure Rate: 2.5mm / 24hrs

Cure System: Moisture Cure

Full Cure: (1mm film) Approx. 18-24hrs Depending on temperature and relative humidity. Curing time extended in low humidity

Walk on time: 16hrs – light traffic

Tack Free time: Approx. 1.25hrs @ 23°C 50% RH

Shore A Hardness: Approx. 50

Tensile Strength in Shear (2mm) Timber to Timber – BS EN 14293
1.3N/mm

Coverage: V3 Notch = 1.2-1.4m² / per litre V4 Notch = 1-1.2m² / per litre



Bostik Ultraset 3in1 Acoustic Timber Flooring Adhesive 26kg

Bostik Ultraset 3 in 1 is a high performance flooring adhesive, moisture control, and sound reduction membrane all in one. Bostik's breakthrough AXIOS® Tri-Linking™ Polymer Technology is used in this formulation, maintaining the superior long term durability, moisture control and sound abatement properties of high end urethane adhesives.

- 3 in 1 adhesive, moisture control and sound reduction membrane
- Thickness Control™ Spacer Technology maintains thickness between hardwood flooring and substrate
- Extremely low moisture vapour permeability
- Superior sound control typically outperforms 3mm rubber underlay
- 3mm Anti-fracture performance can bridge cracks up to
- Zero VOC (as calculated per SCAQMD Rule 1168)
- No restriction on board width or length
- Blockade® anti-microbial protection

Recommended Uses:

Suitable substrates include: concrete, terrazzo, ceramic tiles, timber, plywood and cement backer board- Adheres parquet, cork, solid strip softwood, hardwood flooring, engineered flooring and bamboo flooring.

Coverage:

V4 Flat Notch (4.8mm) = 20-22m² @ 4.8mm Trowel Spread

V6 Notch Trowel (6mm) = 12-13m² @ 6mm Trowel Spread



STAR 100 - Hardset Vinyl Fast Setting Adhesive 18kg

-VINYL PLANK, VINYL SHEET, VINYL TILES FLOOR COVERINGS!

Dispersion adhesive for resilient synthetic floor and wall
Fast Setting one-side Adhesive Solvent-free, very low emission
multipurpose dispersion adhesive for a wide variety of flooring materials

Features:

- Short tack up time Solvent free and very low emissions For PVC and rubber flooring
- Easy trowel
- Promotes advanced Indoor-Air-Quality

Recommended Uses:

- Bonding vinyl (sheet, tiles or planks)

Specifications:

Trowel Recommendations: 1.6mm to 2.0mm V-Notch trowel.

Coverage: 4-5m² per 1kg Usage with V1 Notch

Colour: Cream White

Packaging: 18kg Tub

Application: Interior

Skin over time* / Tack time: approx 5-15mins

Open Time: approx. 40 minutes (covering dependable)

Ready for Traffic: Approx 24 hours

Full Strength: Approx 72 hours

Floor Heating Systems: Suitable





WAKOL PU280 - Moisture Barrier - 1 Component Ready to use Full Membrane

*****LAY FLOORS WITHIN THE HOUR***
SAME DAY WITH NO DELAYS !!!!!**

45 mins Dry Time

Wakol PU 280 is a ready-to-use 1-component polyurethane primer for priming absorbent and non-absorbent subfloors, and to reinforce abraded resp. sanded concrete edges. Also for capillary ascending humidity and higher residual humidity up to 6 CM% / 98 corresponding RH % in cement screeds without floor heating, on heated cement screeds up to max. 3 CM% / 85 corresponding RH % as well as on concrete up to max. 7,5% by weight / 98 corresponding RH %; applicable as moisture barrier on unheated cement screeds and concretes without prior moisture measurement.

- Application method: WAKOL Primer Roller, short haired velour or foam roller
- Consumption: approx. 100-150 g/m² as primer, approx. 250-350 g/m² as moisture barrier
- Drying time: approx. 40-50 minutes
- Storage: not below +5 °C, store in a cool place
- Base: polyurethane resin
- EMICODE: EC1 PLUS
- ZERO VOC - No Odour

Suitable Applications:

Porous & NON-Porous Surfaces

- Concrete
- Screed
- Timber
- Plywood
- Tiles
- Most Surfaces

Sizes Available:

- 5L Drum
- 11L Drum

Coverage:

- 1 Coat @ 150µm wet film
- 5L Consumption = 30 m²
- 11L Consumption = 70-80 m²

WAKOL®
Anspruch verbindet

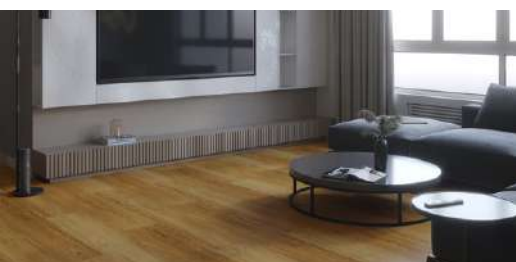


45 MINUTES FAST SETTING DRY TIME



ROLL ON APPLICATION - 1 COMPONENT





1540mm x 228mm x 5.5mm - **Floating Floor - 100% Waterproof**

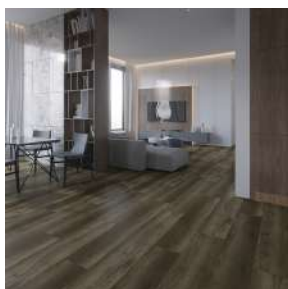
COLOUR SHADE SELECTIONS

SPECIFICATIONS:

Type: Engineered Hybrid Floating Flooring
Thickness: 5.5mm (1.5mm Built in Acoustic 6 star Underlay)
Width: 228mm
Length: 1540mm
Surface Finish: UV Coating- Anti bacterial
Edging: 4-Sided Micro-Bevelled Edges
Profile: Licenced Click System
Installation Method: Floating
Pack Size: 2.458 m²
Pack weight: 20.5 kg
Boards per pack: 7 Boards
Slip Resistance: P3
Wear Layer: 0.5mm
Construction: Rigid Core; LVT balance layer; Cushion pad
Warranty: 20 years Residential + 3 Years Commercial
Structural Warranty: Lifetime
Accessories: Matching Stair Nosing + Matching Scotia + L Angles + Reducers + T-Mouldings



SAND BEIGE



MISTY BROWN



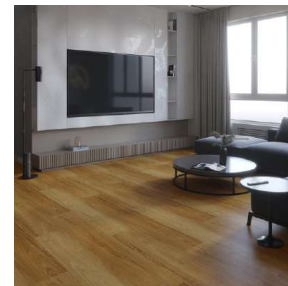
CARAMEL



CLASSIC GRAY



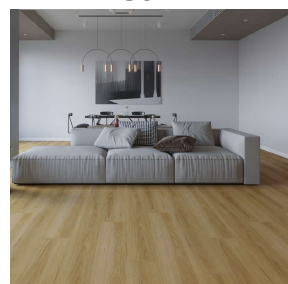
CLASSIC SPOTTED GUM



NATURAL SPOTTED GUM



GOLDEN BLACKBUTT



NATURAL BLACKBUTT



Stair Nosing



T-moulding



L angle



Carpet Reducer



Scotia



Reducer



1800mm x 228mm x 9.0mm - Floating Floor - 100% Waterproof



SPECIFICATIONS:

Type: Engineered Hybrid Floating Flooring

Thickness: 9.0mm (2.0mm Built in Acoustic 6 star Underlay)

Width: 228mm

Length: 1800mm

Surface Finish: UV Coating- Anti bacterial

Edging: 4-Sided Micro-Bevelled Edges

Profile: Licenced Click System

Installation Method: Floating

Pack Size: 1.6416,2

Pack weight: 20.5 kg

Boards per pack: 4 Boards

Slip Resistance: P4

Wear Layer: 0.5mm

Construction: Rigid Core; LVT balance layer; Cushion pad

Warranty: 20 years Residential + 3 Years Commercial

Structural Warranty: Lifetime

Accessories: Matching Stair Nosing + Matching Scotia + L Angles + Reducers + T-Mouldings



Stair Nosing



T-moulding



L angle



Carpet Reducer

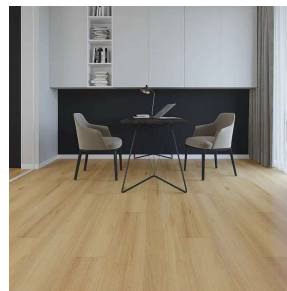


Scotia



Reducer

COLOUR SHADE SELECTIONS



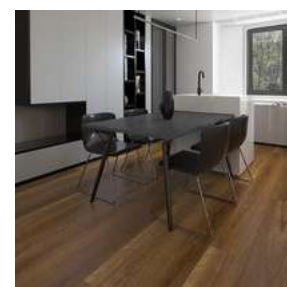
AGED OAK



FRENCH CANVAS



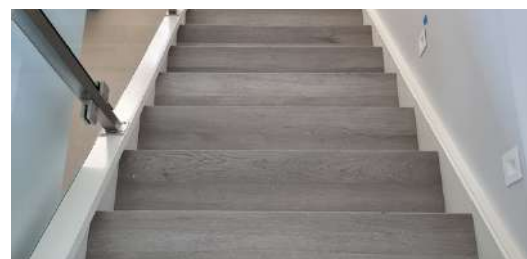
PALE SMOKE


NEW ENGLAND
BLACKBUTT


SPOTTED GUM



PEARL WHITE



1540mm x 182mm x 6.5mm - Floating Floor - 100% Waterproof

FEATURES

100% Waterproof.

1.5mm, 6-star attached acoustic underlay.

Embossed textured surface.

Easy to install and low maintenance.

Durable, stain and scratch resistant.

Lays over almost any pre-existing floor surface.

Subject to Wonderwood's installation guidelines and Australian standards, including appropriate expansion gaps and correct subfloor preparation.

Technical Specifications:

Type: Engineered Hybrid Floating Flooring

Thickness: 6.5mm (1.5mm Built in Acoustic 6 star Underlay)

Width: 182mm

Length: 1540mm

Surface Finish: UV Coating- Anti bacterial

Edging: 4-Sided Micro-Bevelled Edges

Profile: Licensed Click System

Installation Method: Floating

Pack Size: 2.243 m2

Pack weight: 23.35 kg

Boards per pack: 8 Boards

Slip Resistance: P3

Wear Layer: 0.5mm

Construction: Rigid Core; LVT balance layer; Cushion pad

Warranty: 20 years Residential + 3 Years Commercial

Structural Warranty: Lifetime

Accessories:

Matching Stair Nosing

Matching Scotia

C Channels

Matching L Angles

Matching T-Moulding

Matching Reducer



Stair Nosing



T-moulding



L angle



Carpet Reducer



Scotia



Reducer

WONDERWOOD COLOUR SHADES SELECTIONS



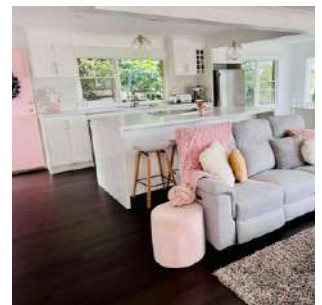
BLACKBUTT



BONE BEIGE



COASTAL BLACKBUTT



CHARCOAL



COPELAND



FOGGY GREY



COBBLE BROWN



FLANNEL GREY



IVORY WHITE



JUNE REEF



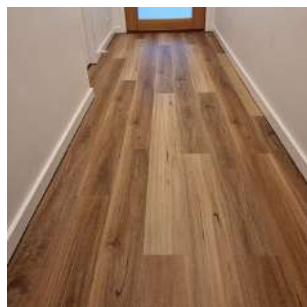
KANDOS GREY



NEUTRAL TAN



**PACIFIC SPOTTED
GUM**



**QLD SPOTTED
GUM**



WARM SMOKE



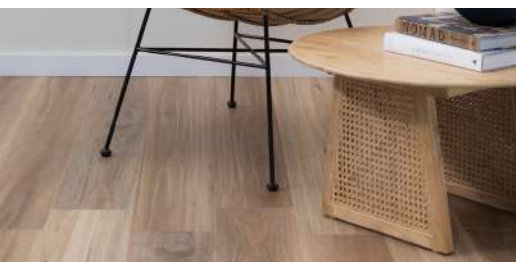
WHITE DOVE



WONDERWOOD

**WE ARE THE LARGEST STOCKISTS
OF WONDERWOOD FLOORING**

www.imperialflooringaustralia.com.au



1500mm x 180mm x 6.5mm - **Floating Floor - 100% Waterproof**

COLOUR SHADE SELECTIONS



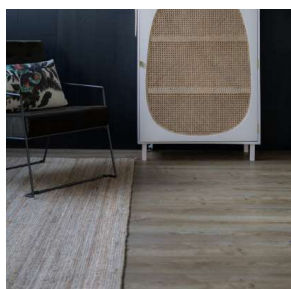
SPOTTED GUM



SANDSTONE



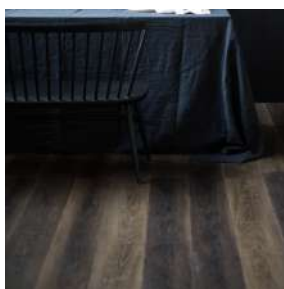
BLACKBUTT



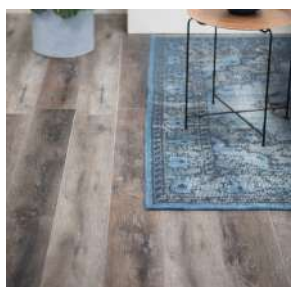
KHAKI



HARBOR GREY



CHESTNUT



FRENCH GREY



CARBON

SPECIFICATIONS:

Type: Hybrid
Thickness: 5mm + backing (6.5mm overall)
Wear layer: 0.55mm
Dimensions: 1500 (L) x 180mm (W)
Planks per box: 6
M2 per box: 1.62m2
M2 per pallet: 89.10m2
Colours: 8
Install Method: Drop Lock
Finish: Matte
Surface: Aus = embossed, oaks = EIRTop
layer: Decorative film & Wear layer
Substrate layer: Limestone composite
Backing layer: 1.5mm IXPE
Profile: Micro bevel
Protective coating: UV coating
Accessories: Stair Nosing, Scotia, L Angle, C Channel, T-Moulding, Reducers

PERFORMANCE:

Dimensional stability: $\leq 0.04\text{mm}$
Abrasion rating: Group T
Residual indentation: $\leq 0.03\text{mm}$
Impact sound reduction: IIC = 54 **Light fastness:** ≥ 6
Fire classification: Available on Request
Slip resistance: Available on Request **Residential Warranty:** 25 Years
Light Commercial Warranty: 10 Years



SUPACORE
 WATERPROOF HYBRID FLOORING
 By Complete Floors Australia



1511mm x 180mm or 229mm - **Floating Floor - 100% Waterproof** COLOUR SHADE SELECTIONS

SPECIFICATIONS:

Type: Engineered Hybrid Floating Floors

Thickness: 5mm + backing (6.5mm overall)

Wear layer: 0.55mm

Width: 229mm or 180mm

Length: 1511mm

Pack Size:

- 180mm @ 1.632m² (6 x boards)
- 229mm @ 2.076m² (5 x boards)

Weight: 23kg

Colours: 12

Install Method: 5G Valinge Lock

Finish: Matte

Edging: Micro-Bevelled Edge

Surface: UV Coating - Anti Bacterial

layer: Decorative film & Wear layer

Substrate layer: Limestone composite

Construction: Rigid Core, LVT Balance Layer;
Cushion Pad

Backing layer: 1.5mm IXPE

Profile: Micro bevel

VOC Rating: A+

Slip Test Rating: R10

Warranty: 25 Years Residential

+ 5 Years Commercial

Accessories: Stair Nosing, Scotia, T-Moulding,
Reducers



WARM SPRING OAK



MOONLIGHT OAK



WEATHER OAK



MURRAY RIVER SPOTTED GUM



NATURAL BLACKBUTT



SEASHELL WHITE



PEARL GREY



ICE SANDY OAK



ALPINE OAK



BLACK FOREST OAK



CLASSIC BLACKBUTT



COTTON OAK



ECO FLOORING SYSTEMS®
— SINCE 1996 —



Premium Laminate AC4 Flooring - 48hr Water Resistant

More water resistant than ever

Your flooring needs to stand up to the wear and tear of everyday life. The new Hydromate range has been created with a tighter clicking system and a protective aluminium oxide layer.

This clever design prevents liquid from finding its way under the surface of your floor.

Choose Hydromate for:

A stunning visual finish.

Superior quality.

48 hour water resistance.

Reduced risk of swelling and distortion.

Other floorboards are instantly susceptible to damage from water and other liquids.

While Hydromate is not 100% waterproof, it provides better protection against everyday liquid spills than any other products.

SPECIFICATIONS:

Type: Laminate Floating Floor

Thickness: 12mm

Width: 195mm

Length: 2250mm

Surface Finish: UV Coating- Anti bacterial

Edging: 4-Sided Micro-Bevelled Edges

Water Protection: 48hours

Profile: Licenced Click System

Installation Method: Floating

Pack Size: 2.2 m2

Pack weight: 25 kg

Boards per pack: 5 Boards

Scratch Resistance: AC4

Slip Resistance: P2

Warranty: 25 years Residential

Structural Warranty: Lifetime

Accessories:

- Matching Stair Nosing
- Matching Scotia
- C Channel
- T Moulding
- Reducer
- L Angles



Stair Nosing



T-moulding



L angle



Carpet Reducer



Scotia



Reducer

HYDROMATE COLOUR SELECTIONS



SPOTTED GUM



DAPPLE GREY



COUNTRY OAK



WINTER RIDGE



BRAVADO



JASPER



SNOWY OAK



PALOMA



BIANCO



BLACKBUTT

Shop now. Pay later.
Always interest-free.

afterpay



Premium Laminate **AC5** Flooring - 48hr **Water** Resistant

What is Swish Aqua laminate aqua?

This is a range of stylish laminate flooring that is to mimic natural looking decors and Australian species designs. Swish Aqua laminate is made with an eye for beauty. It is an aesthetically pleasing flooring that has been made to the highest quality. It is not only warm and aesthetic but also super and tough enough to resist scratches.

What sets it apart from the rest?

- Swish laminate aqua range is a notch above the rest of laminate flooring competing products. Here are a few reasons why it stands a cut above the rest.
- Aqua core – Swish laminate Aqua features a super low swelling HDF wood core. This makes it possible to lay the boards across room 32 meters without expansion gaps in the middle. This is a huge plus if you are flooring a large space. The floor maintains a more uniform look.
- Easy DIY installation - This flooring feature the world's best click lock systems. This locking technology makes it easier and faster to install the flooring. No glues or nails are required. It is possible to install this flooring without heavy duty tools. Your hand's fingertips are enough for most of the work
- Natural touch surface - Swish laminate aqua range also strongly resembles natural Australian wood species. The patterns are embossed for a registered real wood feel.
- Water resistant - This flooring will withstand normal household spills up to 48 hours.
- Super tough scratch resistance - The surface has an AC5 rating. It also impacts resistant meaning items can be dropped on it without denting or chipping.
- Effortless cleaning - Swish laminate aqua flooring can be cleaned quickly. It is safe to clean with soap and water
- Low maintenance and hard wearing – It does not require sanding or staining like natural wood. The Resistant surface makes this flooring suitable even for high foot traffic areas. The floor is also stain resistant making it maintain its looks even in a household with children and pets.
- Non-fading – This flooring will not require painting or staining as the covering coat does not fade easily.
- Flame resistant – This is safer to build with especially for a residential house

SPECIFICATIONS:

Type: Laminate flooring

Thickness: 12.3mm

Width: 196mm

Length: 2200mm

Edging: Micro-Bevelled Edge

Profile: Valinge 5G lock

Installation Method: Floating, glue less on top of underlay

Pack Size: 2.16 m2

Pack weight: 23 kg

Boards per pack: 5

VOC Rating: <E1

Water Resistance: 48 hour Protection

Construction: Aqua core

Abrasion Resistance: AC5 Rating

Applications: For use in interior areas of private homes and commercial establishments

Warranty: 25 years for private use , 7 years commercial use in accordance with the Swish laminate warranty terms



ECO FLOORING SYSTEMS®
— SINCE 1996 —

SWISH AQUA COLOUR SELECTIONS



BLACKBUTT



OAK AMELIA



OAK CHELSEA



OAK OSTANA



OAK FREMONT



OAK COLONIAL



OAK PALENA



OAK NASHVILLE



OAK GEORGIA



SPOTTED GUM



OAK VERMONT



OAK SEATTLE



MiPlank Stunning Selections

MiPlank is designed purposefully for Australian homes and busy families. Featuring longer, thicker planks, MiPlank is easy to install and quiet underfoot. Featuring a PUR coating and heavy duty commercial wear layer, MiPlank is designed to last. MiPlank is suitable for installation to homes as well as a range of heavy duty commercial spaces.

Features:

- **15 planks** inspired by natural timber, each containing unique knot and grain detailing
- Made for busy families, MiPlank features a PUR coating that makes it easy to maintain
- Thicker and longer design of the planks, means MiPlank is easy to install and adds a feeling of spaciousness to any room

Use Areas:

MiPlank is designed purposefully for Australian homes and busy families. Featuring longer, thicker planks, MiPlank is easy to install and quiet underfoot. Featuring a PUR coating and heavy duty commercial wear layer, MiPlank is designed to last. MiPlank is suitable for installation to homes as well as a range of heavy duty commercial spaces.

Specifications:

Available in 2 sizes:

- 1505mm (L) x 185mm (W) x 5mm (T) with 0.55 Wear Layer
- 1219.20mm (L) x 177.80mm (W) x 5mm (T) with 0.55 Wear Layer



COLOUR SHADES SELECTIONS



BLACKWOOD



CARBON TEAK



DARK OAK



GREY GUM



RED HEART GUM



PAPERBARK



SASSAFRAS



SILKWOOD



SILVERBIRCH



SMOKED OAK



SPOTTED GUM



SUN BLEACHED ASH



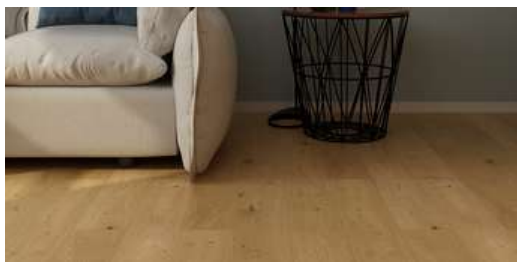
TASMANIAN MYRTLE



WASHED PINE



WATTLE



14mm Oaks

SPECIFICATIONS:

Timber Grade: ABCD

Dimension(mm): L1900 x W190

Thickness(mm): 14

Top Layer(mm): 2

Surface Finish: Brushed UV Lacquer

Gloss Level: 5-8% Super Matt

Nesting: Less than 25% random short boards

Edging: 4 Sided Micro-Bevel

Joining System: Tongue and Groove

Pack Size: 8 Planks / 2.888 m²

Slip Resistance: P3

Installation Methods: Floating on Underlay or Direct Glue Down

Warranty - Wear: Residential 25 Years

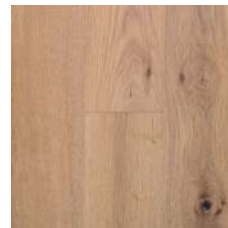
Warranty - Structural Commercial: By Request

Warranty Structural: Lifetime

STUNNING SPECIES SELECTION



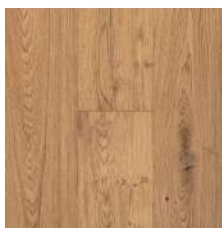
CREAM WHITE



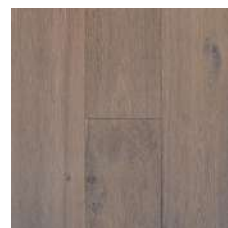
CLASSIC OAK



HONEY BROWN



LIGHT TAN



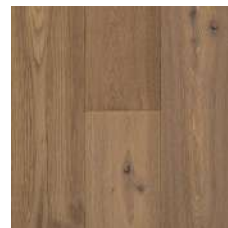
MISTY GREY



LIME WASH



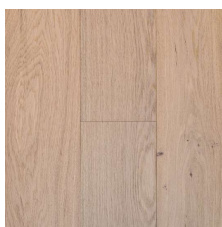
NOBLE GREY



OAK LATTE

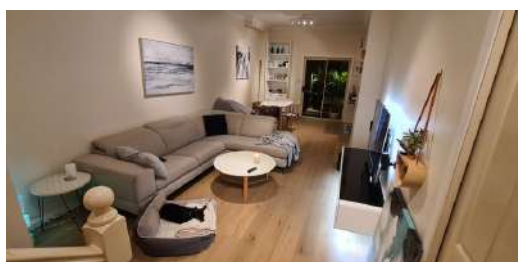


WALNUT



VINTAGE NATURAL





15mm Oaks

STUNNING SPECIES SELECTION

SPECIFICATIONS:

Timber Grade: ABCD

Dimension(mm): L1900 x W190

Thickness(mm): 15

Top Layer(mm): 4

Surface Finish: Light Brushed Lacquer

Gloss Level: 5-8% Super Matt

Nesting: Less than 15% random short boards

Edging: 4 Sided Micro-Bevel

Joining System: Tongue and Groove

Pack Size: 8 Planks / 2.888 m²

Slip Resistance: P3

Installation Methods: Floating on Underlay or Direct Glue Down

Warranty - Wear: Residential 25 Years

Warranty - Structural Commercial: By Request

Warranty Structural: Lifetime



APOLLO GREY



CASPER WHITE



LIGHT NEUTRAL



LIGHT MALT



MIDNIGHT GREY



PALE OAK



STALLION BROWN



TINGE CLAY





15mm Herringbone STUNNING SPECIES SELECTION

SPECIFICATIONS:

Timber Grade: ABCD

Dimension(mm): L600 x W120

Thickness(mm): 15

Top Layer(mm): 3

Surface Finish: Light Brushed UV Lacquer

Gloss Level: 5-8% Super Matt

Edging: 4 Sided Micro-Bevel

Joining System: Tongue and Groove

Pack Size: 16 Planks / 1.152 m²

Slip Resistance: P2

Installation Methods: Direct Glue Down Only

Warranty - Wear: Residential 20 Years

Warranty - Structural Commercial: By Request

Warranty Structural: Lifetime



SMOKED BROWN



RAW NEUTRAL



MOSS GREY



NATURAL LIMED



CORAL SAND



BEIGE ASH





15mm Chevron

SPECIFICATIONS:

Timber Grade: ABCD

Dimension(mm): L770 x W125

Thickness(mm): 15

Top Layer(mm): 3

Surface Finish: Light Brushed UV Lacquer

Gloss Level: 5-8% Super Matt

Edging: 4 Sided Micro-Bevel

Joining System: Tongue and Groove

Pack Size: 16 Planks / 1.54m²

Slip Resistance: P2

Installation Methods: Direct Glue Down Only

Warranty - Wear: Residential 20 Years

Warranty - Structural Commercial: By Request

Warranty Structural: Lifetime

STUNNING SPECIES SELECTION



SMOKED BROWN



RAW NEUTRAL



MOSS GREY



NATURAL LIMED



CORAL SAND



BEIGE ASH





15mm + 20mm Oaks

STUNNING SPECIES SELECTION

SPECIFICATIONS 15mm:

Timber Grade: ABCD
Dimension(mm): L1900 x W190
Thickness(mm): 15
Top Layer(mm): 3
Surface Finish: Light Brushed UV Lacquer
Nesting: Less than 25% Random Short Boards
Gloss Level: 5-8% Super Matt
Edging: 4 Sided Micro-Bevel
Joining System: Tongue and Groove
Pack Size: 8 x Planks / 2.888m²
Slip Resistance: P2
Installation Methods: Direct Glue Down / Floating Floor
Warranty - Wear: Residential 25 Years
Warranty - Structural Commercial: By Request
Warranty Structural: Lifetime

SPECIFICATIONS 20mm:

Timber Grade: ABCD
Dimension(mm): L2200 x W220
Thickness(mm): 20mm
Top Layer(mm): 6mm
Surface Finish: Light Brushed UV Lacquer
Nesting: Less than 25% Random Short Boards
Gloss Level: 5-8% Super Matt
Edging: 4 Sided Micro-Bevel
Joining System: Tongue and Groove
Pack Size: 5 x Planks / 2.42m²
Slip Resistance: P2
Installation Methods: Direct Glue Down / Floating Floor
Warranty - Wear: Residential 25 Years
Warranty - Structural Commercial: By Request
Warranty Structural: Lifetime



SMOKED BROWN



RAW NEUTRAL



MOSS GREY



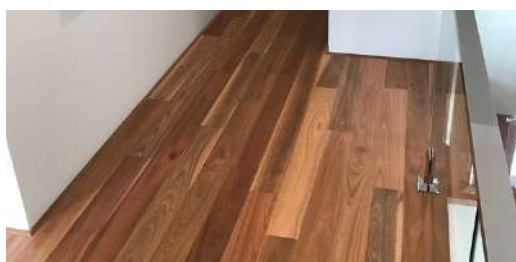
NATURAL LIMED



BEIGE ASH



CORAL SAND



13.5mm AUSTRALIAN NATIVE

STUNNING SPECIES SELECTION

AUSTRALIAN PREMIUM NATIVE COLLECTION

Välinge 5G Glueless Click System

Available Sizes:

- 132mm (Width) x 1820mm (Length) x 13.5mm (Thickness) 4mm wear layer
- 132mm (Width) x 2130mm (Length) x 13.5mm (Thickness) 4mm wear layer
- 180mm (Width) x 1830mm (Length) x 13.5mm (Thickness) 4mm wear layer
- 180mm (Width) x 2130mm (Length) x 13.5mm (Thickness) 4mm wear layer

SPECIFICATIONS:

Locking System: Välinge 5G Glueless Joining System

Width: 132mm and 180mm

Thickness: 13.5mm

Wear Layer: 4mm

Length: 1,820mm & 2,130mm

Surface: Smooth texture

Coating: UV cured 6 coat Klumpp system

Finish: Matt 10% Gloss

Coverage 132mm: 1,820mm – 1.922m² and 2,130mm – 2.249m²

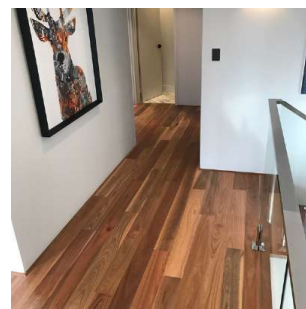
Coverage 180mm: 1,820mm – 1.966m² and 2,130mm – 2.300m²

Packaging 132mm: 8 rows per box, maximum of 3 nested rows

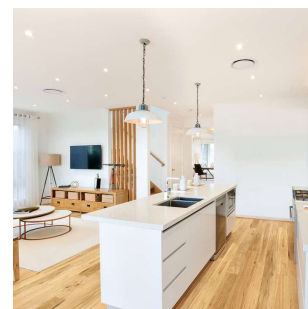
Packaging 180mm: 6 rows per box, maximum of 2 nested rows

Matching accessories: Underlays, Trims, Scotia & Stair Nosings

Warranty: 25 Years Structural



SPOTTED GUM



BLACKBUTT



BLUEGUM



BRUSHBOX



RUSTIC BLACKBUTT



IRONBARK

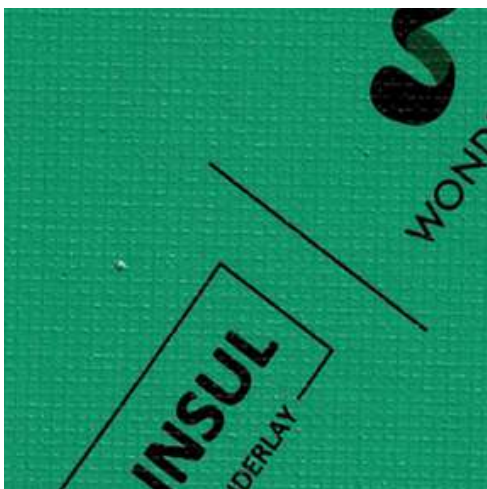




PRO-INSUL 4mm Acoustic Rubber Matting Underlay

SPECIFICATIONS:

Type: Rubber
 Colour: Multicolour
 Surface: Granular Texture
 Roll Size: 1m x 1m ; 1sqm / per sheet
 Thickness: 4mm
 Weight: 3.5kg / per sheet
 Density: 970kg/m³
 AAAC Star Rating: 5
 Suitable Floor Coverings: Laminate & Engineered Flooring
 Strata Certified: Yes



PRO-INSUL 2mm Acoustic Foam Matting Underlay

SPECIFICATIONS:

Type: Foam
 Moisture Barrier Overlap: Yes
 Roll Size: 20sqm or 50sqm
 Thickness: 2mm
 Width: 1meter
 Peel & Stick Tape: Yes
 AAAC Star Rating: 5
 Suitable Floor Coverings: Laminate & Engineered Flooring
 Strata Certified: Yes



2mm Green Acoustic Underlay

SPECIFICATIONS:

Type: Acoustic Green Underlay
 Moisture Barrier Overlap: Yes
 Roll Size: 20sqm Roll
 Thickness: 2mm
 Width: 1meter
 Peel & Stick Tape: Yes
 AAAC Star Rating: 4
 Suitable Floor Coverings: Laminate, Bamboo & Engineered Flooring



3mm Silver 2in1 Foam Underlay

SPECIFICATIONS:

Type: Standard Silver Foam
 Moisture Barrier Overlap: Yes
 Roll Size: 20sqm Roll
 Thickness: 3mm
 Width: 1meter
 Peel & Stick Tape: Yes
 AAAC Star Rating: 4
 Suitable Floor Coverings: Laminate, Bamboo & Engineered Flooring

SUPABORD - HEAVY DUTY TEMPORARY FLOOR PROTECTION

SupaBord Heavy Duty is our premium temporary floor protection product for commercial, residential construction and renovation projects.

SupaBord Heavy Duty is the latest technology in floor protection, providing a balance of vapour permeability, durability and strength. Developed to withstand the demands of the construction industry, each roll covering 30 sqm. SupaBord Heavy Duty is flexible yet strong and made from 100% recycled material.

SupaBord Heavy Duty prevents the risk of damage and rework, saving money on material and labour costs and is the brand of choice by contractors worldwide.

DIMENSIONS:

Size: 800mm wide x 37.5m long, covers 30sqm

SUPABORD JOINT TAPE

SupaBord Joint Tape is one of two tapes in the SupaBord product range.

SupaBord Joint Tape is specifically designed to secure SupaBord Temporary Floor Protection seams together for up to 90 days. SupaBord Joint Tape is made from quality non-woven paper that is breathable and vapour permeable to promote even finishes in curing floors. The 90-day high tack contractor grade hot melt adhesive provides instant and secure attachment that is strong and flexible.

FEATURES:

- Joins SupaBord seams together for up to 90 days
- High tack contractor grade adhesive
- Strong and flexible
- Breathable
- Vapour permeable

DIMENSIONS:

Size: 60mm wide x 40m long x 0.18mm thick

SUPABORD EDGE TAPE

SupaBord Edge Tape is one of two tapes in the SupaBord product range.

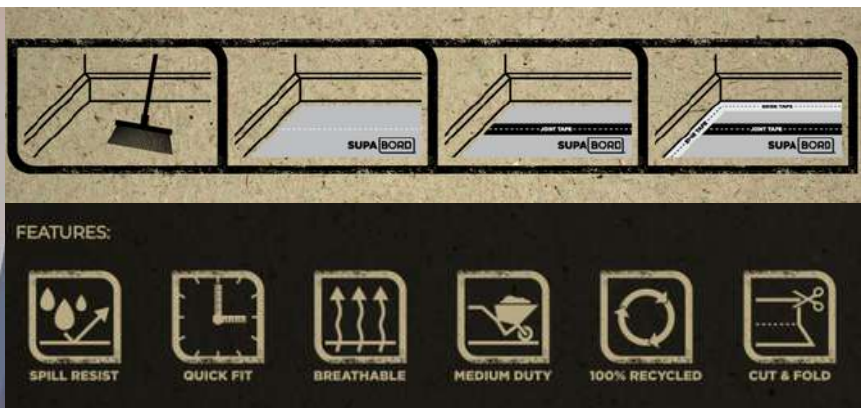
SupaBord Edge Tape is specifically designed to secure SupaBord Temporary Floor Protection to floors and walls for up to 45 days. SupaBord Edge Tape is made from quality crepe paper with a natural rubber adhesive to provide instant attachment to a wide variety of surfaces.

FEATURES:

- Joins SupaBord floor protection edges to floors for up to 45 days
- Low to medium 45-day contractor grade adhesive
- Strong and flexible

DIMENSIONS:

Size: 40mm wide x 30m long x 0.12mm thick







COMMERCIAL VINYL SHEET







ONE STOP FLOORING STORE



WHITE NON - MARKING
MALLET



TROWELS V4 + V6
TIMBER FLOORING



SAUSAGE GUNS 600ML



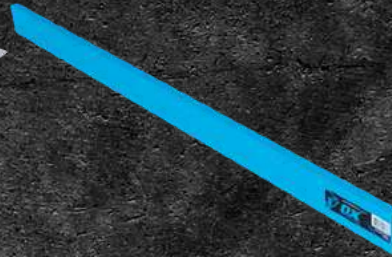
0-100MM FLOOR
LEVELLING PEGS



MIXING HAND DRILLS



FLOOR LEVELLING
HAND TROWELS



STRAIGHT EDGES



CAULKING GUNS



COLOUR MATCHING
L ANGLE TRIMS



COLOUR MATCHING
C CHANNEL TRIMS



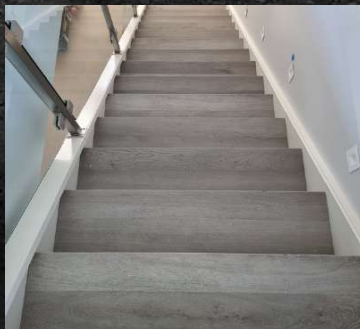
CLEANING WIPES
NON-SCRATCH



FLOOR SCRATCH
REPAIR KITS



COLOUR
MATCHING SCOTIA'S



PRE-FABRICATED STAIR
NOSINGS
FOR ALL OUR FLOORING
RANGES



COLOUR
MATCHING T-MOULDINGS



COLOUR
MATCHING REDUCERS

+ **MUCH MORE:** LEARN MORE ONLINE

SHOP NOW: www.imperialflooringaustralia.com.au/shop



www.imperialflooringaustralia.com.au/shop



General Inquiries

Contact: 1300 676 176

Email: info@imperialflooringaustralia.com.au

Commercial & Wholesale Inquiries

Managing Director: Nick Lopez

Contact: 0456 645 690

Email: nick@imperialflooringaustralia.com.au



Shop now. Pay later.
Always interest-free.



Wollongong

Unit 10 / 10-12 Sylvester Ave
Unanderra NSW 2526

HEADOFFICE + SHOWROOM + WAREHOUSE

Sydney

On Request Wetherill Park NSW 2164

DISTRIBUTION CENTRE

Melbourne

On Request, Truganina VIC 3029

DISTRIBUTION CENTRE

IMPERIAL

FLOORING AUSTRALIA

WHOLESALE - COMMERCIAL - TRADE - RETAIL - DIY

FLOORING PACKAGES

www.imperialflooringaustralia.com.au